

REPRESENTANTE: SHINI DO BRASIL *OFICIAL / IPLAS-JESONS (EMPRESA CONTROLADORA DA SHINI DO BRASIL)

SOMENTE E-MAILS TERMINADOS EM SHINIBR SÃO OFICIAIS DA SHINI DO BRASIL

SITE OFICIAL: WWW.SHINIDOBASIL.COM.BR E/OU WWW/IPLAS.COM.BR

FONES (11) 2225-1721 / 2225-1724 / 2339-6857 / 2339-7018

CONTATO: ELISEU SANTANA (11) 94953-6466 WHATSAPP SANTANA@SHINIBR.COM.BR / VENDAS@IPLAS.COM.BR

ELISEUSANTANA30@GMAIL.COM



Dehumidifying Dryer

SDD-160U/120H-D

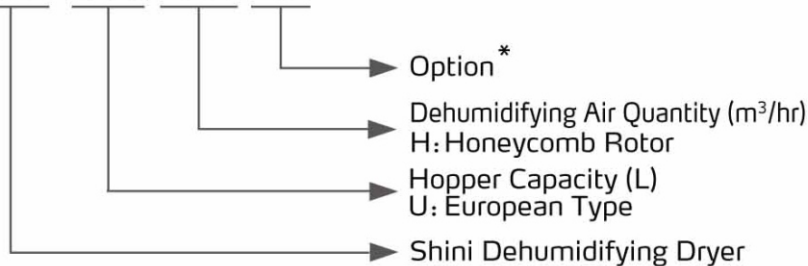


Refer carefully to this manual before operation.

SDD Series

■ Coding Principle

SDD-xxxU/xxxH-xxx



Notes: *

LC= PLC+HMI D = Dew-point Monitor CE =CE Conformity

P= For Polished Hopper Inside DC=Dew-point Control

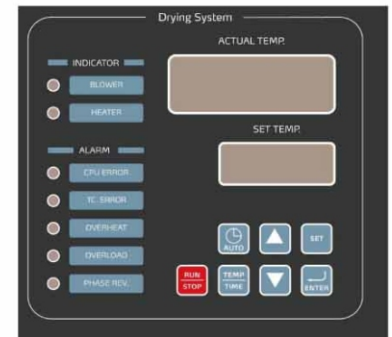


SDD-160U/120H-LC-D

■ Features

Standard configuration

- The SDD dehumidifying dryers use honeycomb dehumidifiers with an eye-catching semi-integral appearance.
- Each model combines dehumidifying and drying functions into a single unit.
- Insulated drying hopper features dry air down-blowing and cyclone exhaust design. This improves drying efficiency and reduces energy consumption while maintain a steady drying effect.
- The dehumidifying section of the SDD series adopt cooler to ensure a low return air temperature and low dew-point.
- Compact in size for ease of movement and space saving.
- Microprocessor is the standard equipment.

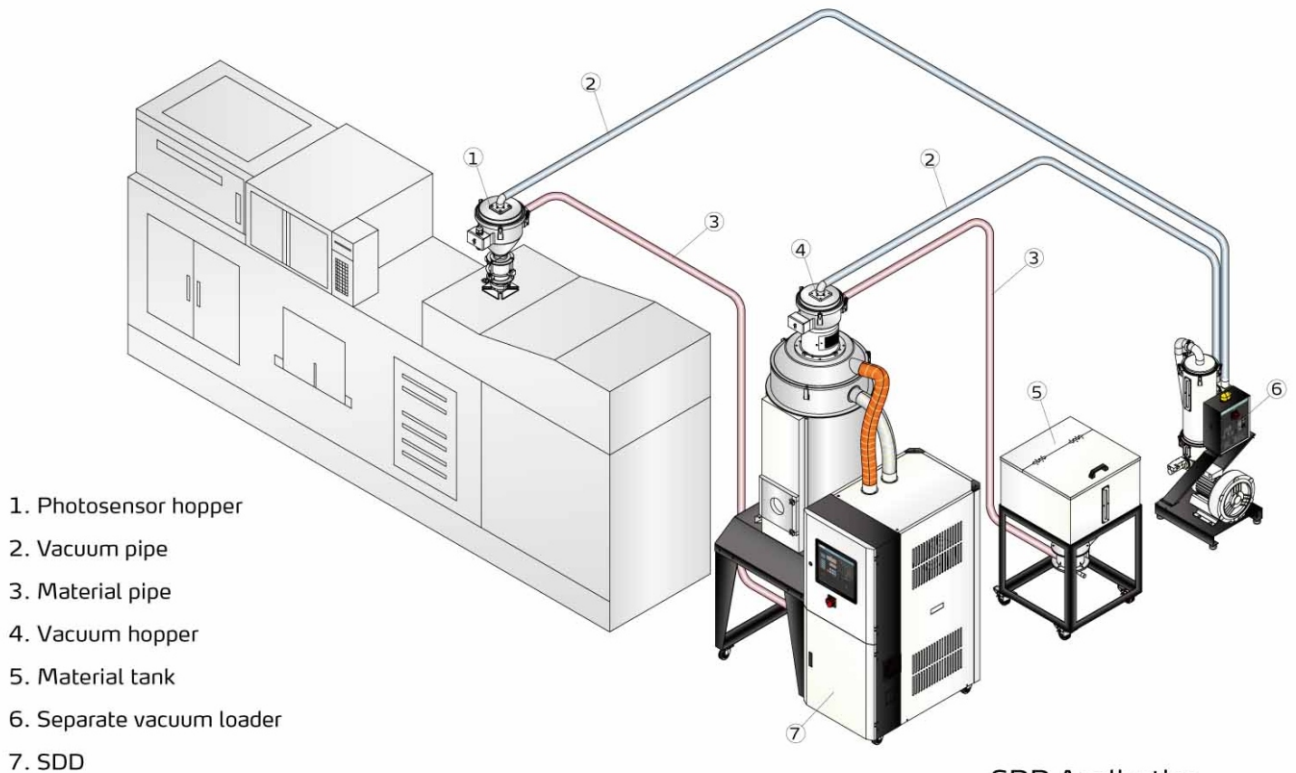


Control Panel

Accessory option

- Dew-point monitor is available as option.
- Suction box and hopper loader are optional for conveying material conveniently.
- PLC control plus LCD touch screen is optional for convenient centralized control.
- For models with energy-saving drying management, add "ES" at model behind, standard equipped with HMI touch control, which can save up to 41% of total power consumption. Volume used per hour is settable between 40~100% as drying capacity to save the totally power consumption of 35%~0; Standard equipped with heat regenerative recycler which recycles the regeneration air exhausted heat via plate heat exchanger and can save 3%~6% of total power consumption.
- For models optional with dew-point control, add "DC" at model behind. "ES" by setting if dew-point value to control the regeneration required temperature automatically and lowers power consumption of the regenerative heater; According to -40°C~+10°C of dew-point value, the total power consumption can save 0~10%.
- For models optional with drying heat recycler, add "HE" at model behind. Dehumidified low temperature air via plate heat exchanger to recycle the heat of hot-wet return air, which can higher the air temperature in drying heater and lower the power consumption of the heater, the total power consumption can save 0%~19%.

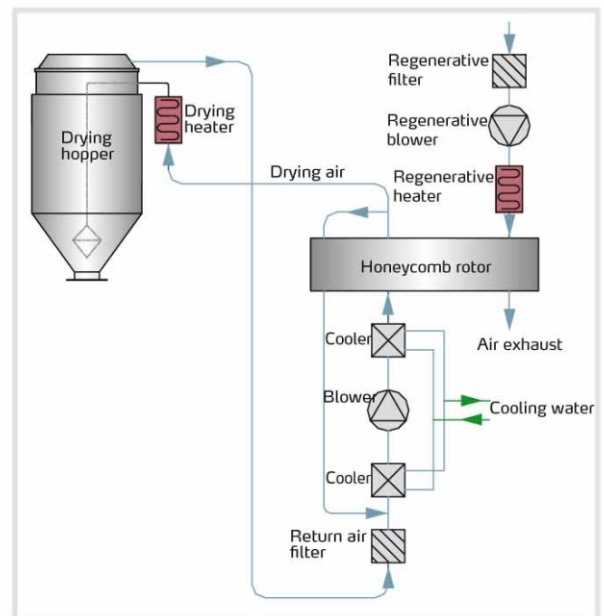
Application



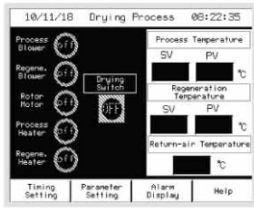
SDD Application

Working Principle

Damp and hot air from dry material barrel is blown into rotor after cooled. Moisture from the air is absorbed by rotor and is then adsorbed by regeneration heating air. Two strands of airflow function on the rotor. And with the rotation, moisture from the air is absorbed and expelled after absorbed regeneration air to form stable low dew-point air, which is dried to the drying temperature and then is blown into material barrel to closed circle to dry material.



Options



Touch Screen
(LCD with PLC Control)

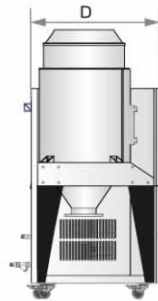
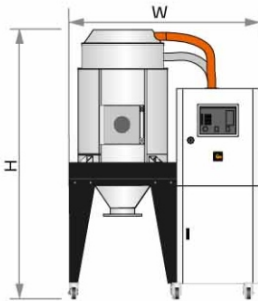


Dew-point Monitor
(Installed on the machine)



SCD-OP High Efficiency
Particulate Absorbing Filter

Outline Drawings



Specifications

Model	20U/ 40H	40U/ 40H	80U/ 40H	120U/ 80H	160U/ 80H	160U/ 120H	230U/ 120H	300U / 200H	450U/ 200H	600U/ 400H	750U/ 400H	900U/ 700H	1200U/ 700H	
Regen. Heater (kW)	4			3			4		7.2		10			
Regen. Blower (kW, 50/60Hz)	0.2/0.3			0.2			0.4		0.75		1.5			
Drying Heater (kW)	4			6			12		18		24			
Drying Blower (kW, 50/60Hz)	0.12/0.12			0.75			1.5		3.75		5.5			
Dry Air Volume (m ³ /hr, 50/60Hz)	40/45			80			120		200		400		700	
Insulated Hopper	L	20	40	80	120	160	230	300	450	600	750	900	1200	
	gal	5.3	10.6	21	31.7	42.3	60.8	79.3	118.9	158.5	198	237.8	317	
Dimension	H	mm	1260		1650	1780	1740	2010	2040	2440	2380	2610	2640	3070
		inch	49.6		65	70	68.5	79	80.3	96	93.7	102.8	104	121
	W	mm	960		1060	1075	1220		1450		1745		2140	
		inch	37.8		41.7	42.3	48		57		68.7		84.3	
D	mm	860			855			1050		1255		1380		
	inch	33.9			33.7			41.3		49.4		54.3		
Weight	kg	150	165	190	250	255	265	295	420	550	620	650	830	870
	lb	331	364	419	551	562	584	650	926	1213	1367	1433	1830	1918

Notes: 1) Plastic materials can be fully dried by drying air with dew-point temperature $\leq -20^{\circ}\text{C}$.
2) Power: 3 Φ , 230/400/460/575VAC, 50/60Hz.

We reserve the right to change specifications without prior notice.

Shini Group

Addr: No. 23, Minhe St., Shulin Dist.,
New Taipei, Taiwan

Tel: +886 2 2680 9119

Fax: +886 2 2680 9229

Email: shini@shini.com

Factories:

- Taiwan
- Dongguan
- Pinghu
- Ningbo
- Chongqing
- Pune

2015-09-15-04 Copyrights Reserved.

www.shini.com